

→ LE FUTUR DE LA PROPHYLAXIE MULTIPIEZO PRO



→ MULTIPIEZO PRO *touch*

→ MULTIPIEZO *touch*

→ THE TECHNOLOGY

→ CLINICAL APPLICATIONS

→ THE INSERTS RANGE

→ MULTIPIEZO PRO *touch*

→ NEW MULTIPIEZO PRO *touch*



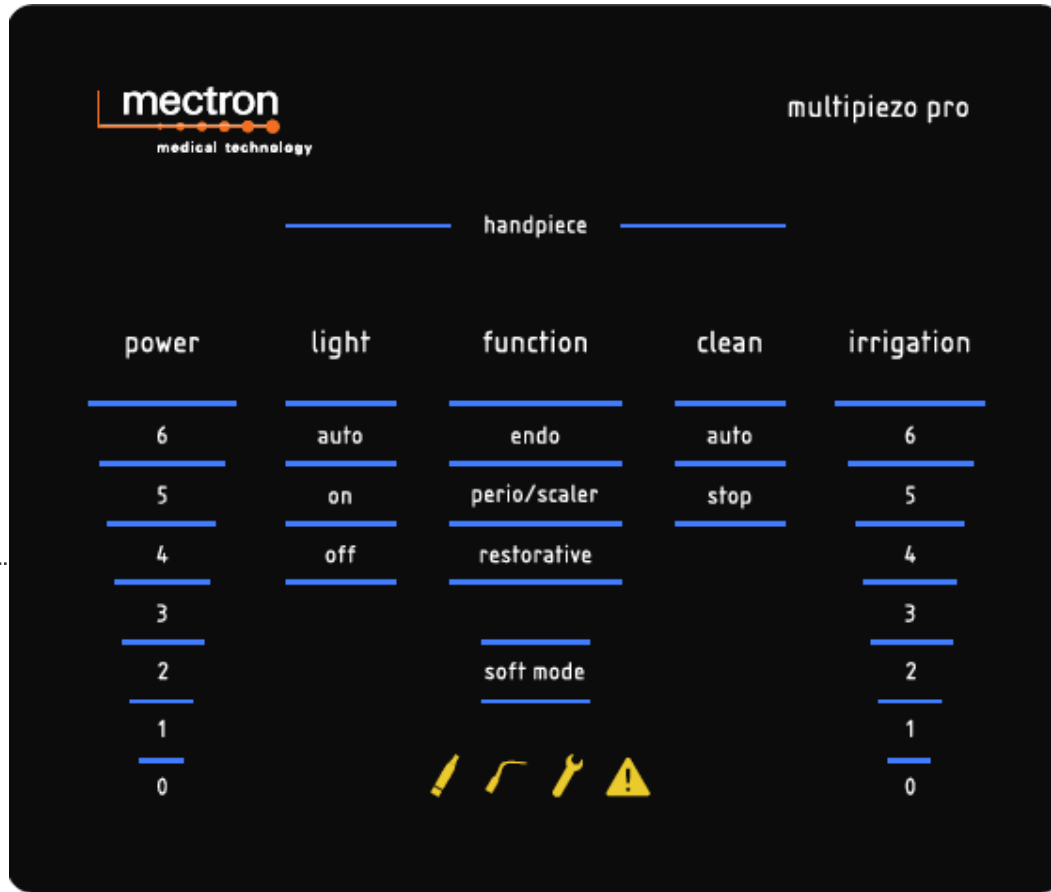
→ MULTIPIEZO PRO *touch*

→ MAXIMUM ERGONOMICS - USER FRIENDLY



→ MULTIPIEZO PRO *touch*

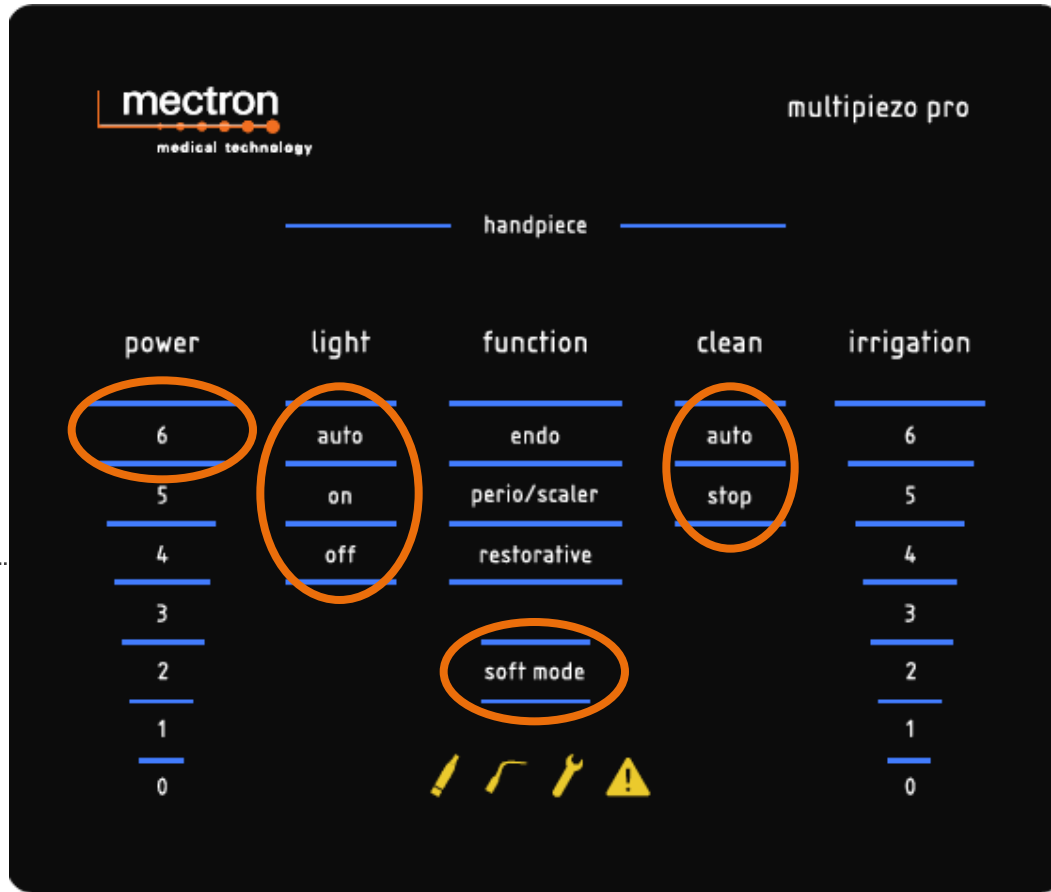
→ MAXIMUM ERGONOMICS - USER FRIENDLY



- set the requested function (endo, perio/scaler, restorative)
- set the power level (1-6)
- whenever needed set the special function "soft mode" or "pulse mode" according to the patient type and/or clinical application
- set the irrigation level (1-6)

→ MULTIPIEZO PRO *touch*

→ ESCLUSIVE GLASS TOUCH SCREEN KEYBOARD



- soft mode: for sensitive patients! Available in perio/scaler and restorative up to level 5
- pulse mode: optimized ultrasound performance for innovative prosthetics solutions and extractions.
- LED handpiece with new swivel-type light focus
- clean function for automatic cleaning of the irrigation tubes

→ MULTIPIEZO *touch*

→ NEW MULTIPIEZO *touch*



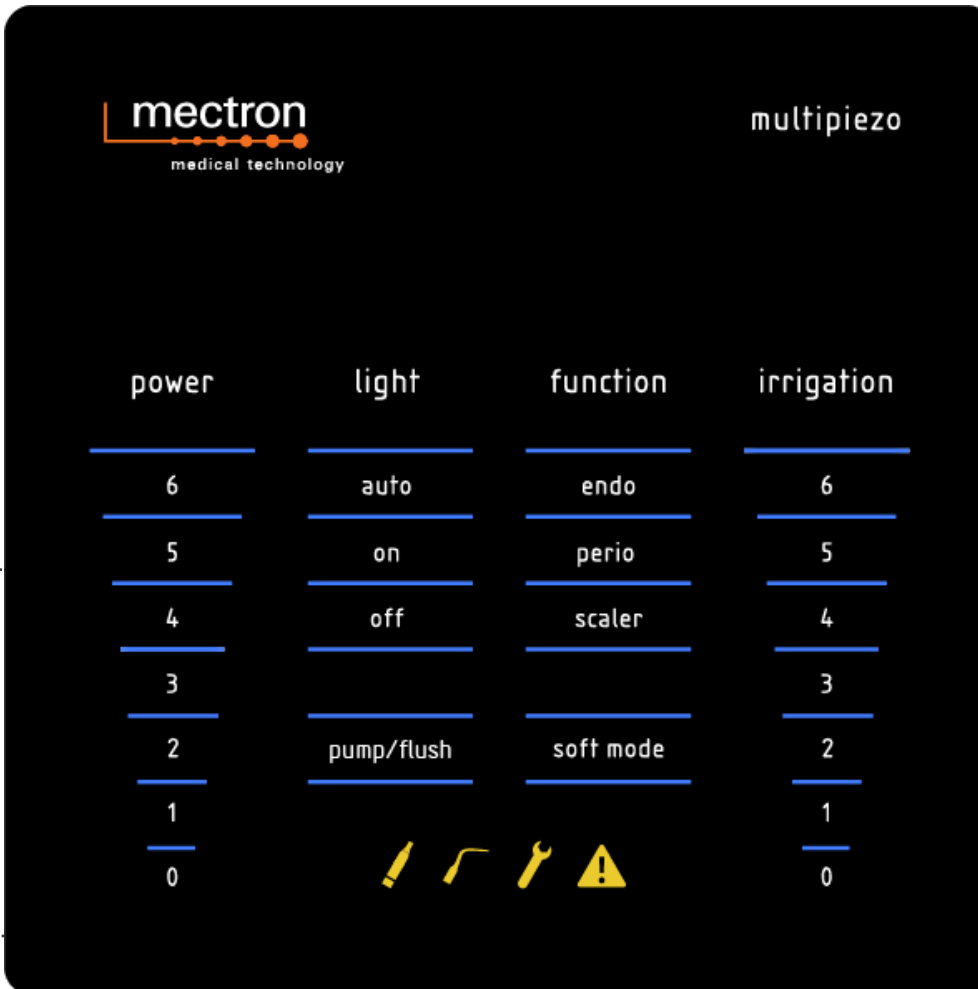
→ MULTIPIEZO *touch*

→ IN 2013, LOOKING BEAUTIFUL IS LOOKING REALLY BEAUTIFUL



→ MULTIPIEZO *touch*

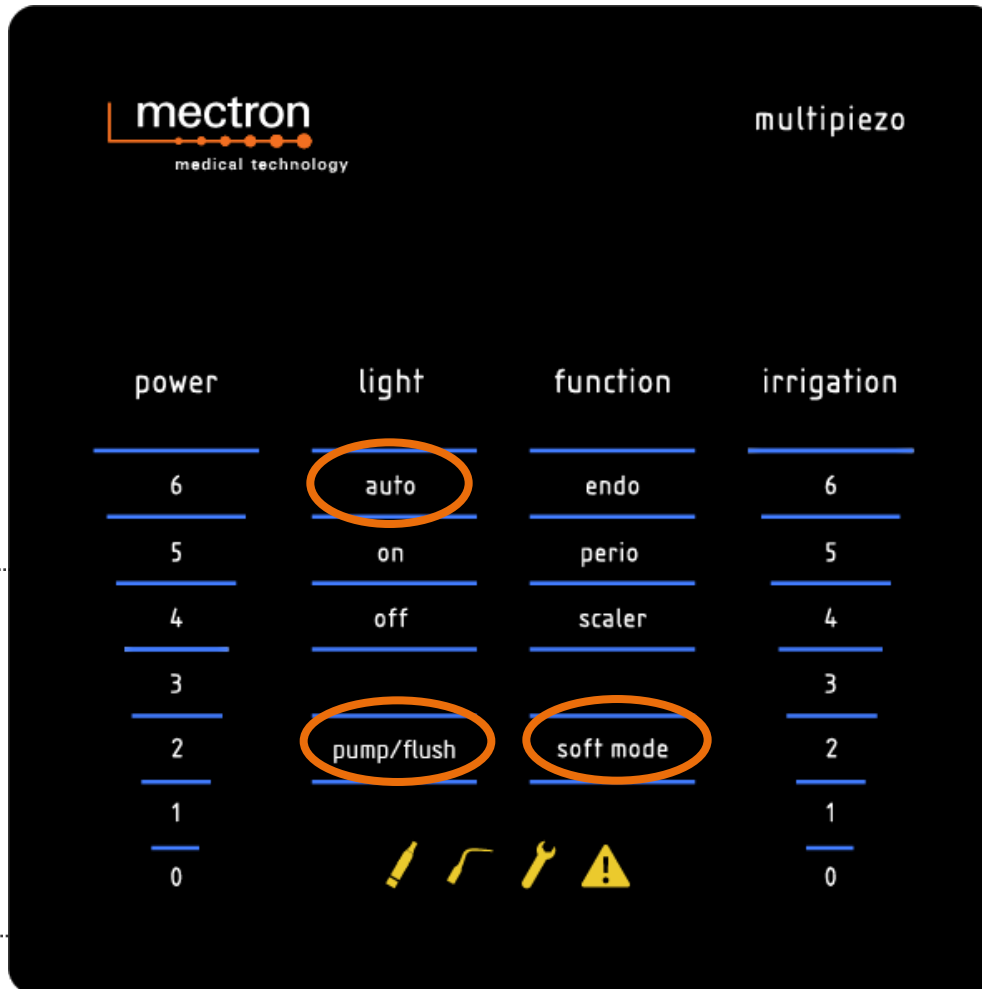
→ MAXIMUM ERGONOMICS - USER FRIENDLY



- set the requested function (endo, perio and scaler)
- set the power level (1-6)
- whenever needed set the special function "soft mode" according to the patient type and/or clinical application
- set the irrigation level (1-6)

→ MULTIPIEZO *touch*

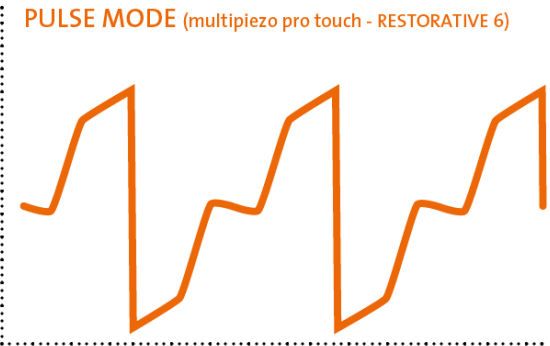
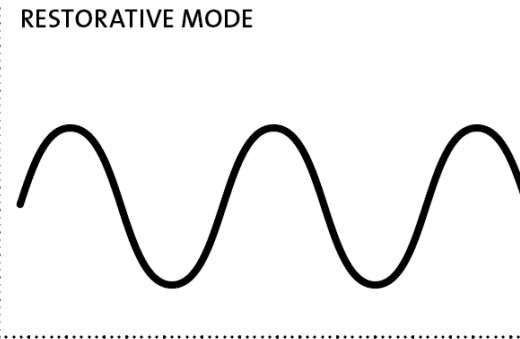
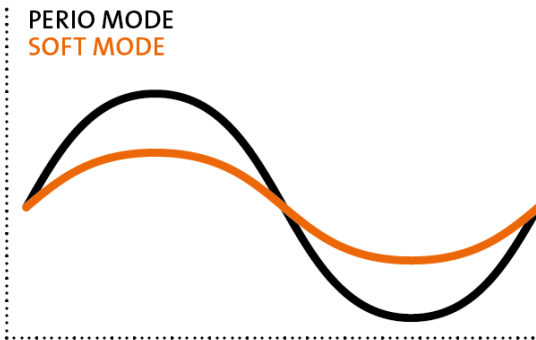
→ ESCLUSIVO GLASS TOUCH SCREEN KEYBOARD



- soft mode: for sensitive patients! Available in perio and scaler for all power levels (not endo)
- LED handpiece with new swivel-type light focus
- pump/flush function for the automatic cleaning of the irrigation tubes

→ MULTIPIEZO PRO *touch* AND MULTIPIEZO *touch*

→ SOFT MODE AND PULSE MODE: THE NEW STANDARD



Mectron's innovative software switches the modulation of the ultrasound into its unique soft mode and thus creates a gentle but still powerful insert movement. The result: treatment efforts are met perfectly – sensitive patients treated with maximum comfort.

Setting level 6 of the restorative function upon the keyboard of the new **multipiezo pro touch**, the pulse mode transforms the traditional sine wave formed ultrasound oscillation (standard function) to a new profile characterized by specific power peaks, which results in an optimized performance for extractions and prosthetics.

→ MULTIPIEZO PRO *touch* AND MULTIPIEZO *touch*

→ AS FLEXIBLE AS IT GETS: THE IRRIGATION SYSTEM



- illuminated 500 ml bottle
- working with any medicinal solution (f.e. H_2O_2 , chlorhexidine)
- no dripping and no leaking

- tap water connection
- avoids any leaking risk due to innovative connection system
- optional accessory (not provided with the original equipment of the device)

→ **ANTI-DRIPPING
SYSTEM**

→ MULTIPIEZO PRO *touch* AND MULTIPIEZO *touch*

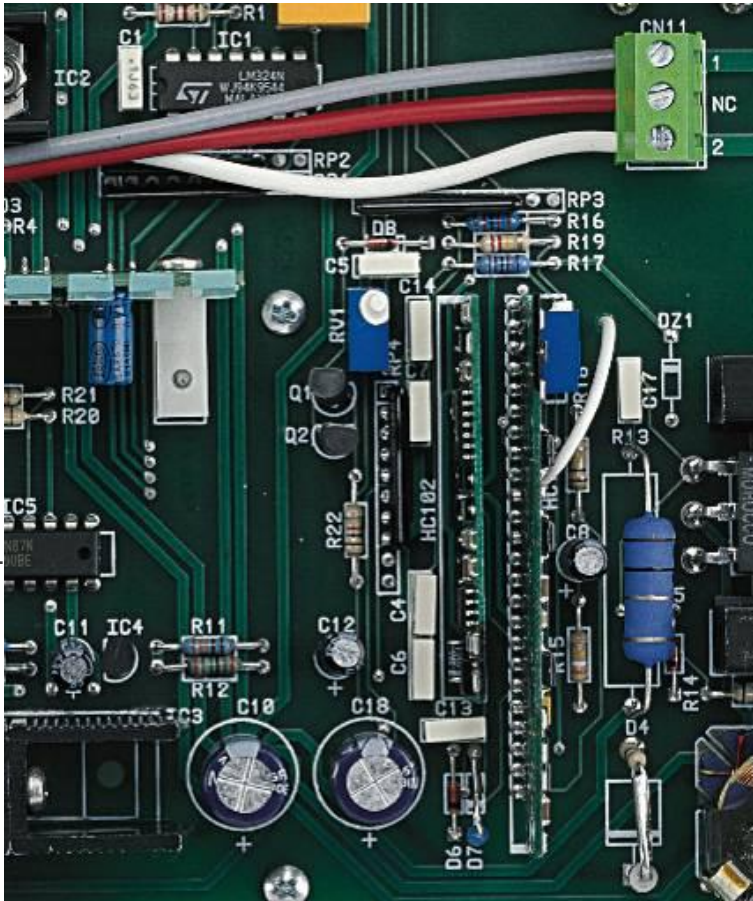
→ LED HANDPIECE: LIGHT FOCUS ALWAYS ON THE INSERT TIP



- swivel-type LED-handpiece can rotate 360°
- optimum illumination of the treatment site independently of the insert shape
- reduction of the “smog” effect, resulting from the cavitation effect of ultrasonic inserts
- choice between automatic and permanent light or switched off

→ THE TECHNOLOGY

→ ULTRASOUND TECHNIQUE: MECTRON ELECTRONICS



→ feedback system

- monitors performance and adjusts it when needed within only a few hundredths of a second
- user intervention simplified to the push of the foot pedal

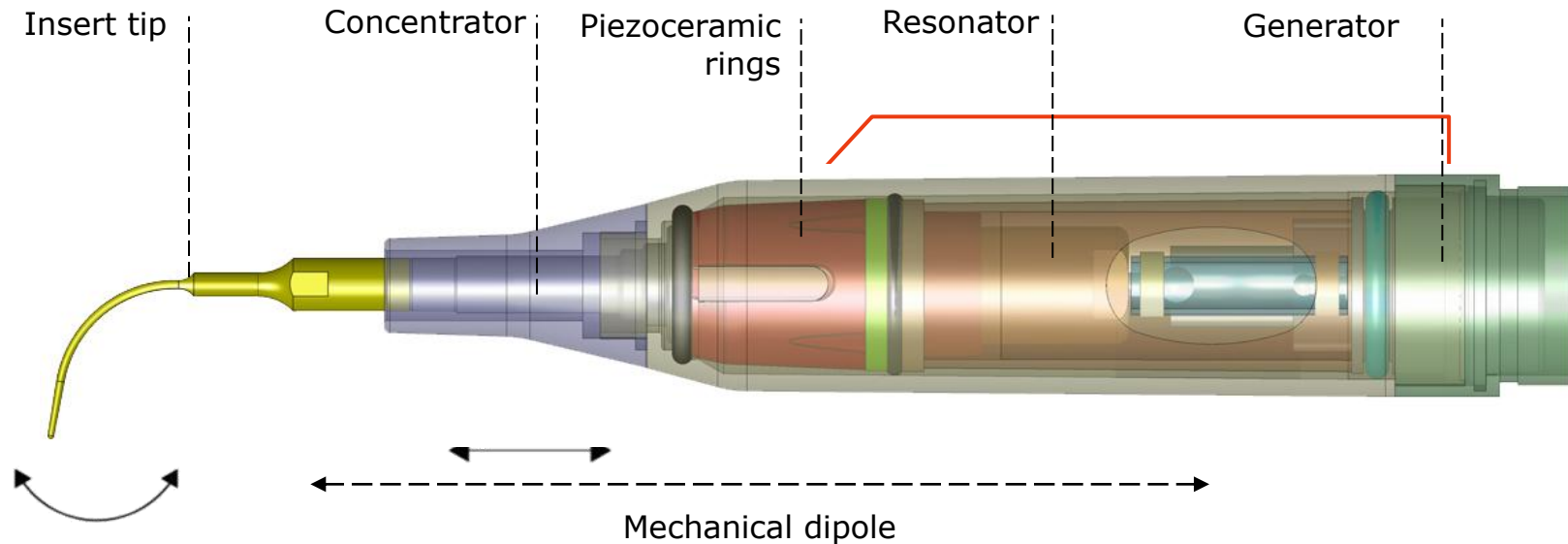
→ automatic protection control

- recognizes deviations automatically
- stops ultrasound and flow of liquid in less than 0,1 seconds
- shows cause of the interruption on the display



→ THE TECHNOLOGY

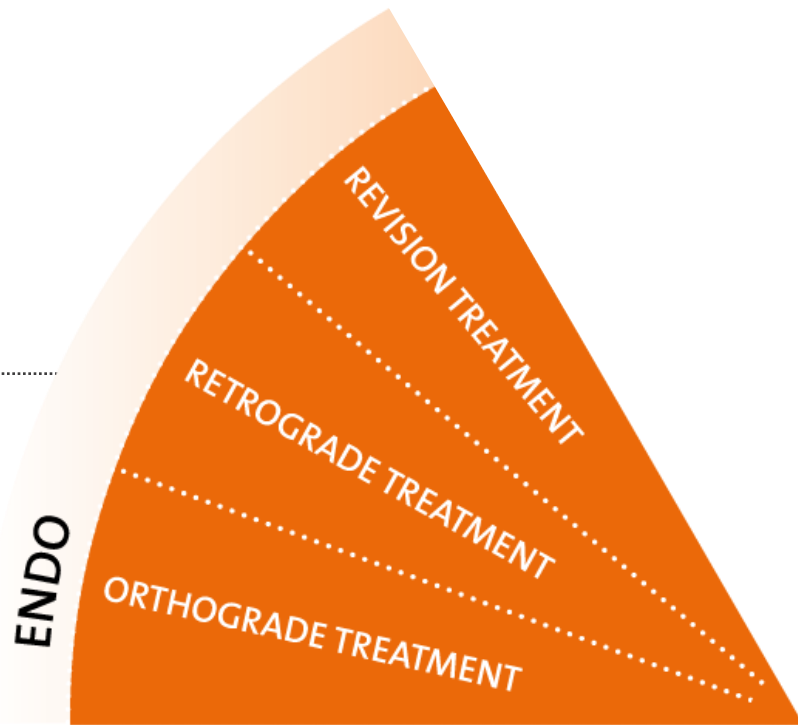
→ ULTRASOUND TECHNIQUE: THE HANDPIECE



- High frequency electrical impulses from the electronic module to the ceramics discs
- Mechanical deformations of the 4 ceramic discs conducted into a concentrator in titanium
- Generation of a micrometric movement of the insert

→ CLINICAL APPLICATIONS

→ FROM ENDODONTICS TO PERIODONTICS,
FROM SCALING TO RESTORATIVE.....



→ THE INSERT RANGE

→ A VARIETY OF INSERTS WITH DIFFERENT SHAPES

- more than 50 inserts available
 - up to 36.000 oscillations/second
 - the titanium nitride coating increases the insert surface hardness and avoids corrosion
-
- the tightening torque is steady thanks to the dedicated dynamometric wrench



→ THE INSERT RANGE

→ STANDARD INSERTS FOR SCALING



→ **SOFT MODE**

→ scaling inserts from S1 to S5

average oscillations amplitude: 70-90 μm

→ THE INSERT RANGE

→ STANDARD INSERTS FOR SCALING



→ scaling inserts from S1 to S5

correct use



→ THE INSERT RANGE

→ SCALING HIGH EFFICIENCY INSERTS



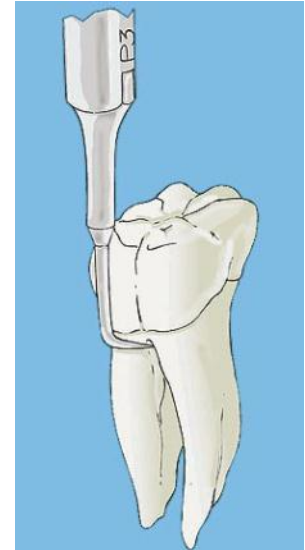
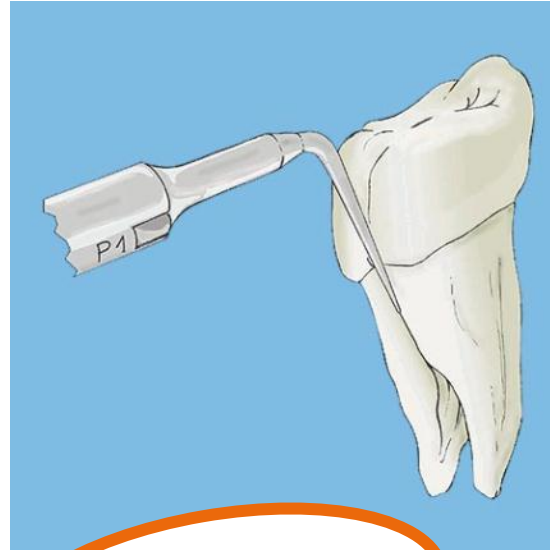
→ scaling inserts from S6 to S8

average oscillations amplitude: 120 - 180 μ m

→ PERIO/SCALER
STANDARD

→ THE INSERT RANGE

→ PERIO UNIVERSAL INSERTS



→ perio inserts from P1 to P4
subgingival treatment

→ **SOFT MODE**

→ THE INSERT RANGE

→ PERIO ANATOMIC INSERTS



→ perio inserts from P10 to P12
optimal access to root surfaces

→ **SOFT MODE**

→ THE INSERT RANGE

→ IMPLANT CLEANING INSERT

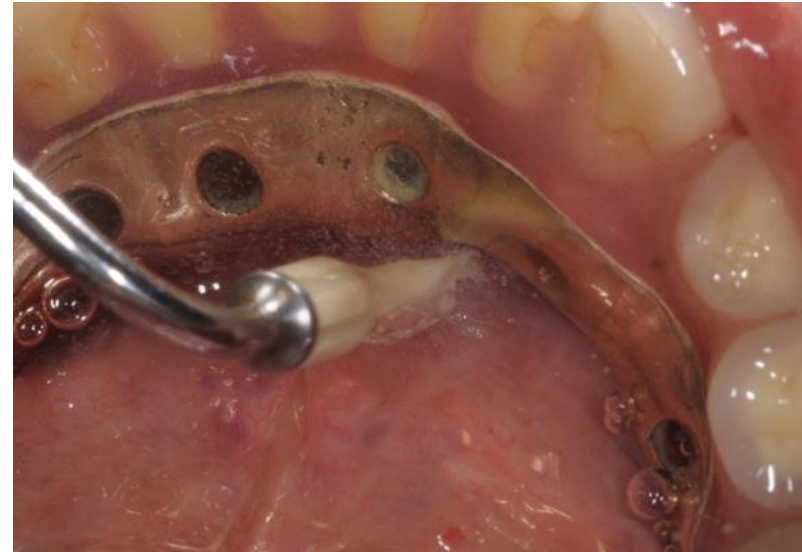


→ efficient and painless!

→ **SOFT MODE**

→ THE INSERT RANGE

→ IMPLANT CLEANING INSERT

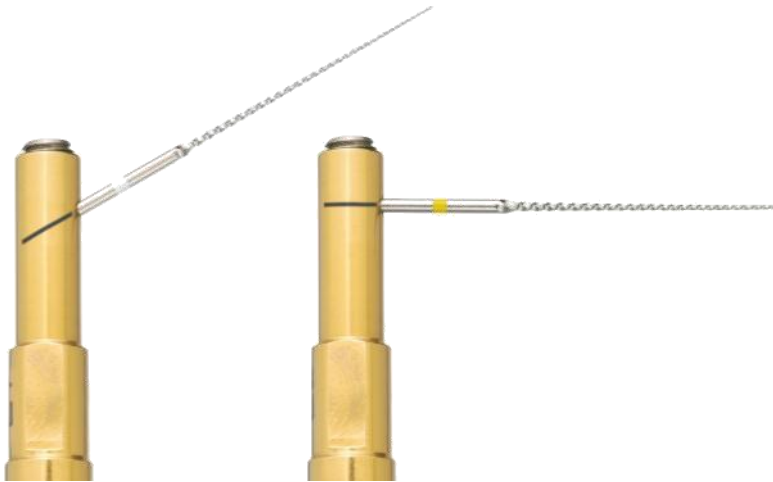


→ tipholder ICS with tip IC1

- maximum respect of the implant surface (tip IC1 – 100% PEEK)
- optimal access and visibility, also in posterior regions (tipholder ICS)
- tipholder ICS and tip IC1 are fully sterilizable
- the absence of metal core in the tip IC1 avoids the risk of implant surface damage

→ THE INSERT RANGE

→ INSERTS FOR ROOT CANAL CLEANING

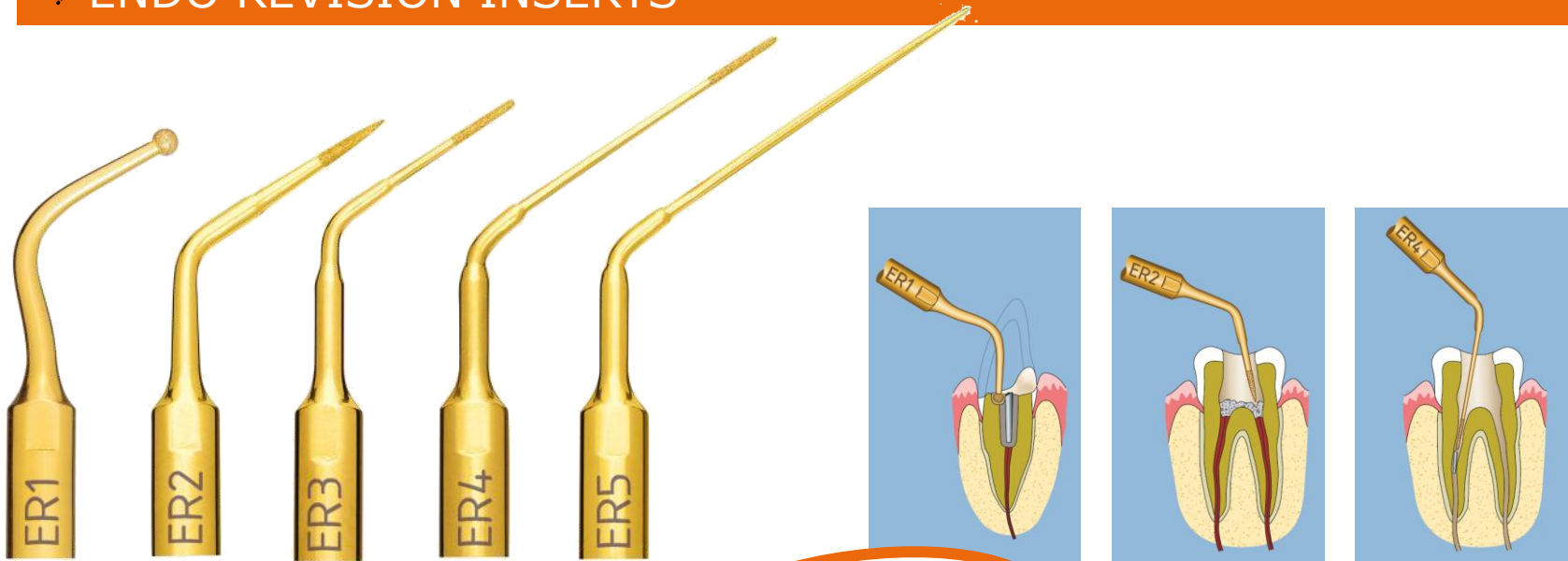


→ endo inserts from E1 to E2 with nickel-titanium files

→ **ENDO**

→ THE INSERT RANGE

→ ENDO REVISION INSERTS



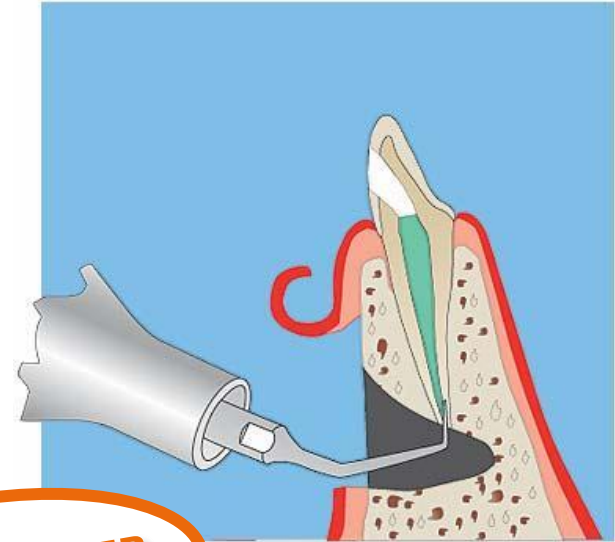
→ endo inserts from ER1 to ER5

removal of root pins,
calcification, removal of
fractured root inserts

→ **PERIO/SCALER
STANDARD**

→ THE INSERT RANGE

→ ENDO RETRO INSERTS



→ endo inserts from RD3 to RD5

diamond coating for retrograde root canal preparation

→ PERIO/SCALER STANDARD

→ THE INSERT RANGE

→ ENDO RETRO INSERTS

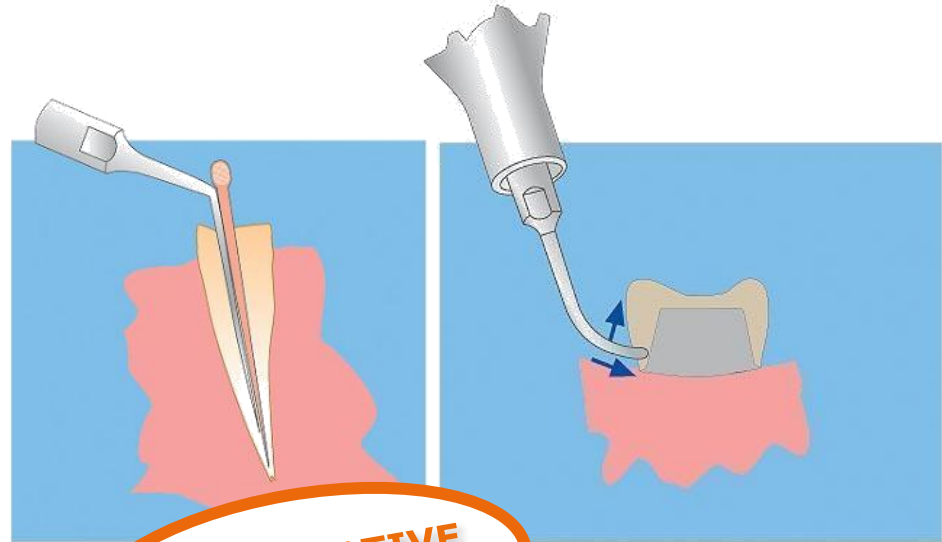


→ endo inserts from R1 to R5
smooth inserts for finishing

→ **PERIO/SCALER
STANDARD**

→ THE INSERT RANGE

→ RESTORATIVE INSERTS



→ restorative inserts from D1 to D4

amalgam condensation, guttaperca,
removal of crowns and bridges

→ **RESTORATIVE
MULTIPIEZO PRO**

→ THE INSERT RANGE

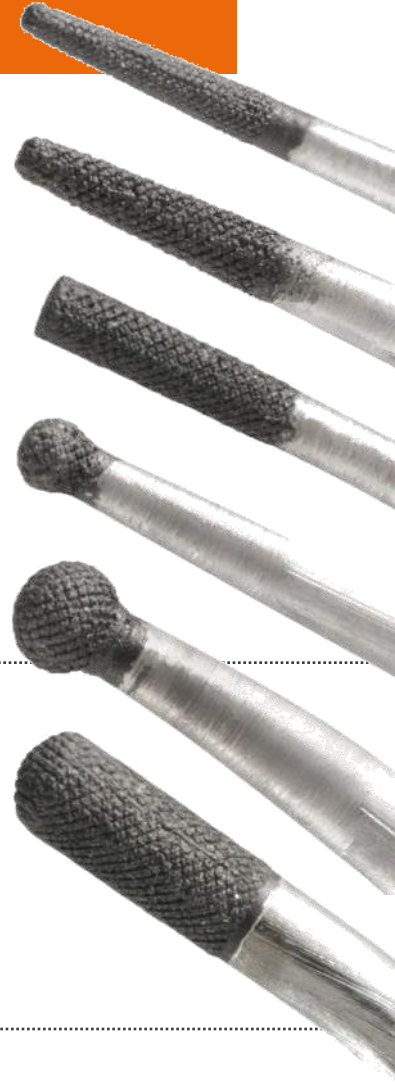
→ RESTORATIVE INSERTS



→ RESTORATIVE
MULTIPIEZO PRO

→ cavity prep inserts from CP1 to CP6 – Mectron exclusivity !

patented CVD technology
(chemical vapor deposition)



→ THE INSERT RANGE

→ RESTORATIVE INSERTS



→ cavity prep inserts from CP1 to CP6 – Mectron exclusivity !

- total visibility and access - minimally invasive preparation
- reduced risk of hitting the adjacent tooth – high cutting precision
- improved proximal finishing
- soft tissues will be preserved
- minimized noise level
- absence of pain preventing the use of anaesthesia

→ THE INSERT RANGE

→ INSERTS FOR PROSTHESIS



→ crown prep tips

→ PULSE MODE
MULTIPIEZO PRO

ultrasonic finishing of subgingival margins

→ THE INSERT RANGE

→ INSERTS FOR PROSTHESIS



→ **PULSE MODE
MULTIPIEZO PRO**

→ crown prep tips

- thanks to the elliptic tip movement maximum precision and control
- special shape and unique tip movement enable to work all around the tooth without changing position
- maximum respect of soft tissues
- no trauma or bleeding
- available 8 different tips (D60, D90, D120 – 1,2 / 1,4 / 1,6 mm)

→ THE INSERT RANGE

→ INSERTS FOR TEETH EXTRACTION



→ extraction inserts from ME1 to ME3

- a blade thickness of only 0,35 mm guarantees the maximum precision of the cutting action
- maximum intra-operative sensitivity, allowing to remove the tooth while preserving healthy bone and without damaging the alveolar walls and periodontium surfaces
- minimize the potential trauma

→ MECTRON - NEW MULTIPIEZO PRO *touch*



→ SOFT MODE

→ PULSE MODE

→ 3 IRRIGATION LINES

→ 2 LED HANDPIECES

→ SCALING, PERIO,
ENDO, RESTORATIVE

→ MECTRON - NEW MULTIPIEZO *touch*



→ SOFT MODE

→ 2 IRRIGATION LINES

→ LED HANDPIECE

→ SCALING, PERIO,
ENDO